

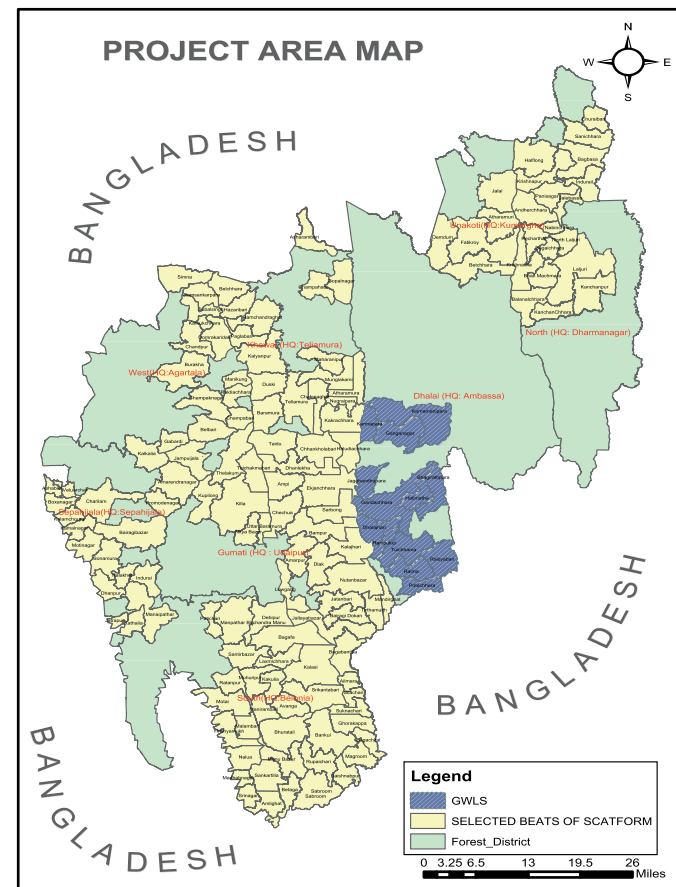
PROJECT AREA AND IMPLEMENTATION

In order to reach the project objective, 135 forest beats have been selected in seven districts as per the five criteria mentioned below :-

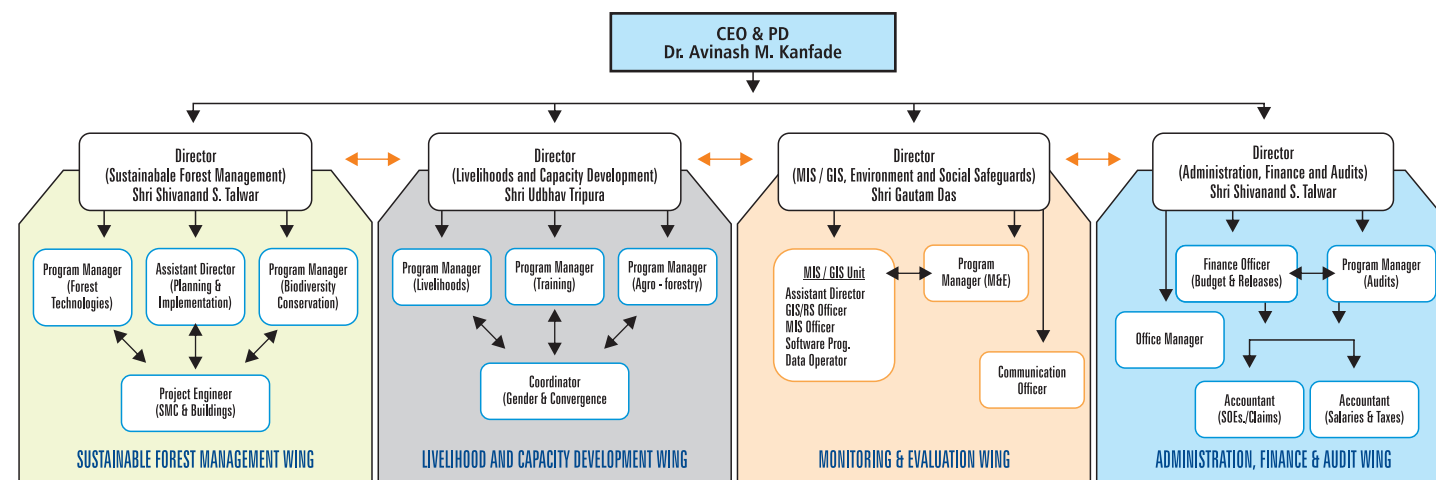
- Current status of forest degradation
- Status of soil erosion
- Ratio of the number of RoFR households
- Ratio of the households dependent on forest
- Ratio of households with casual labor as a source of income

Forest Beat is the unit for prioritizing the project target catchment and 135 Forest Beats in 33 ranges of 15 territorial sub-divisions of seven districts have been selected for project intervention. Within each Forest Beat, roughly three Joint Forest Management Committees (JFMCs) are expected to be formed. Besides, 27 Eco-development committees (EDCs) in 13 beats of Gomati Wildlife Sanctuary are also planned to be worked within the project. In all, a total of 450 JFMCs/EDCs are to be worked within the project. The work with JFMCs and EDCs will be grouped into three batches;

1. 106 JFMCs and 13 EDCs for Batch 1,
2. 211 JFMCs and 14 EDCs for Batch 2 and
3. 133 JFMCs for Batch 3.



Administrative Structure of Project Management Unit of SCATFORM Project



YOUR CONTRIBUTION TO THE NEWSLETTER

We request and encourage you to share your experiences under the Project. You can highlight activities and achievements of the Joint Forest Management Committee. You can also consider inspiring stories of individuals who are doing good work which needs to be shared with other people in the state. This will provide recognition to individuals and provide opportunities for other people to learn from the experiences. You can share your experiences with our field personnel in your JFMC.

You can also write to us at : tripurajica@gmail.com

CEO & PD, Tripura SCATFORM Project, Prakriti Bhawan, Gandhigram, West Tripura 799012



JANUARY 2021

VOL. 1, ISSUE 1

NEWSLETTER

SUSTAINABLE CATCHMENT FOREST MANAGEMENT (SCATFORM) PROJECT



MESSAGE OF PCCF & HoFF



Forest as a natural resource and its management is a key issue for the upliftment of the rural people of Tripura and also the environment.

The SCATFORM project targets at to facilitate sustainable development, by improving soil moisture and conservation of forest cover. It also aims to apply the best forestry practices, by developing latest technologies in forest department and

encourage strong community participation.

I am delighted to know that Tripura JICA Project (SCATFORM) is publishing its monthly newsletter in January 2021. It is believed that this newsletter will disseminate the information to the various stakeholders about the progress of various interventions under the project.

Dr D K Sharma, IFS
PCCF & HoFF

MESSAGE FROM CEO & PD



On behalf of SCATFORM, I am delighted to share the first newsletter of the project. The primary purpose of the newsletter is to inform the readers about the project and periodically share the progress and achievements of the project. This first newsletter details the purpose, objective and structure of the project.

The Project aims to improve quality of forest in the targeted catchment with main focus on catchment protection. The duration of this project is 10 years (from September 2018 to September 2028) and the project components include bio-physical interventions (in forestry and soil & water conservation) and livelihood interventions.

Information contained in this and subsequent newsletters, I believe, would contribute towards maintaining transparency that SCATFORM would like to promote in its functioning and operations.

Dr. Avinash M Kanfade, IFS
Chief Executive Officer & Project Director

SUSTAINABLE CATCHMENT FOREST MANAGEMENT (SCATFORM)



PROJECT OUTLINE

Project objective of SCATFORM is to enhance quality of forest and its management in the targeted catchment, thereby improving forest ecosystem services and meeting the livelihoods needs of forest dependent communities by ensuring sustainable utilization of forests and, water resources.

The 10-year SCATFORM project period has three phases including, Preparatory Phase (18 months), Implementation Phase (84 months), and Phase out Phase (18 months). SCATFORM has four key components including (1) Sustainable Forest Management, (2) Soil and Moisture Conservation, (3) Livelihood Development, and (4) Institutional Strengthening and Project Management. The components are further divided into 26 sub components.

Loss of forest cover and forest degradation highly increases the vulnerability of hilly area to soil erosion, especially in upper catchment areas. About 34 percent of the land area in Tripura is prone to severe soil erosion, where the annual soil loss is more than 80 tons per hectare. High erosion adversely affects land productivity. Soil and water run-off due to forest degradation has resulted in formation of ravines, gorges or gullies along banks of running water bodies. In heavy erosion areas, sediment accumulation in water beds has led to a reduction in the widths and depths of water courses. River bed siltation makes the river shallow resulting in flooding in rivers especially during monsoons. Further, soil erosion reduces the capacity of irrigation facilities due to sedimentation as well as access to drinking water in rural communities. Despite adequate rainfall, water scarcity remains a matter of concern in many regions due to unfavourable geographic features. Presence of a sloppy terrain in most areas provides less scope for water retention and absence of proper watershed management plans accentuate the problem.

Between 2007 and 2017, Tripura Forest Environment Improvement and Poverty Alleviation Project was implemented with assistance from Japan International Cooperation Agency (JICA) to improve the forest and other natural resources for the benefit and welfare of the forest dependent communities. To further enhance and augment the quality of the forest and its management, the Government of Tripura has received a loan from the JICA to finance the Project for Sustainable Catchment Forest Management in Tripura (SCATFORM) in the state of Tripura.



Following are the components and sub-components of the project.

1. Sustainable Forest Management	2. Soil and Moisture Conservation
1.1 Department Mode 1.1.1 Improvement of Forest Nurseries 1.1.2 Application of Plantation Models 1.1.3 Habitat Improvement in Gumti Sanctuary 1.2 JFM Mode 1.2.1 Establishment of Decentralized People's Nursery 1.2.2 Application of Plantation Models 1.2.3 Eco development	2.1 Construction of Check Dams 2.2 Erosion Prevention Works combined with Check Dams 2.3 Assessment of Soil and Moisture Conservation Model
3. Livelihood Development	4. Institutional Strengthening
3.2 Community Organizations for Livelihood Development 3.3 NTFP based Livelihoods 3.4 Agro-forestry based Livelihoods 3.5 Livestock and Fish Farming based Livelihoods 3.6 Ecotourism development 3.7 Revolving Fund to JFMC/EDC for small IGA	I. Institutional Strengthening 4.1 Department Mode 4.1.1 Infrastructure and Mobility Enhancement 4.1.2 Enhancement of GIS/ MIS facilities 4.1.4 Gender Mainstreaming 4.1.5 Enhancement of Environment and Social Considerations 4.1.6 Capacity Development of Forest Department 4.1.7 Forest Research 4.2 JFM Mode 4.2.1 Infrastructure and Mobility Enhancement 4.2.2 Capacity Development of Community Institutions II. Project Management 4.3 Department Mode 4.3.1 Preparatory Activity for Project Implementation 4.3.1.1 Institutional Set-up and Procurement 4.3.1.2 Map preparation 4.3.1.3 Batch-wise Approach 4.3.1.4 Preparation of Beat Forest Basic Plan 4.3.1.5 Baseline Surveys 4.3.1.6 Identification of RoFR and JFMC lands 4.3.1.7 Preparatory Activity for Community Mobilization & Planning 4.3.1.8 Review and Revision of Project Manual 4.3.1.9 Orientation of Project Staff 4.3.2 Monitoring & Evaluation 4.3.2.1 Monitoring 4.3.2.2 Impact Assessment & Studies 4.3.3 Phase-Out Activity - Project 4.4 JFM Mode 4.4.1 Preparatory Activity for Community Mobilization & Planning 4.4.2 Operationalizing M&E System 4.4.3 Phase-Out Activity - JFM